

# Spring tune up!

Presented by Eric Sumner - March 10, 2015

# Engine Performance

Plugs

Cap

Rotor

Wires

Points

Condenser

Ignition Resistor

Coil

Timing

# Plugs



Carbon Deposits



Oil Deposits



Too Hot



Preignition



High Speed Glazing



Gap Bridging



Normal



Ash Deposits



Worn



Detonation



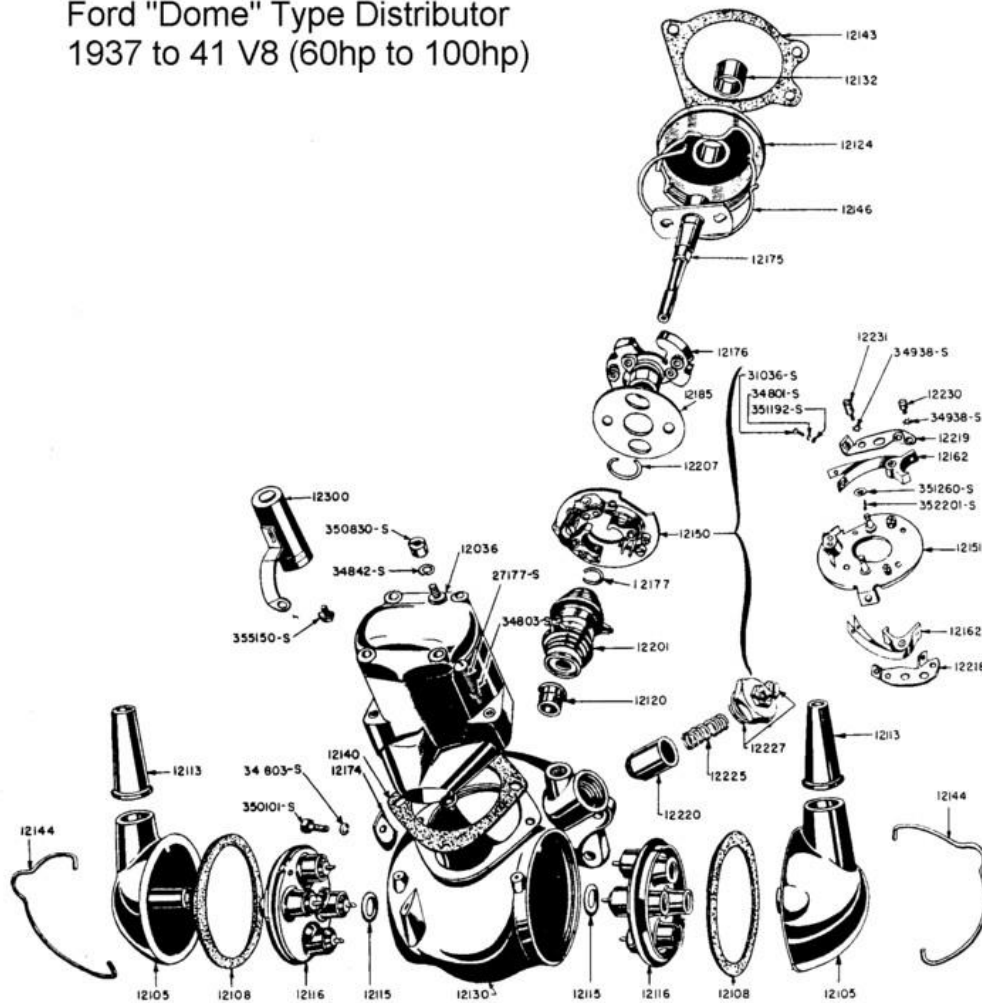
Splashed Deposits



Mechanical Damage

# Caps and Rotor

Ford "Dome" Type Distributor  
1937 to 41 V8 (60hp to 100hp)

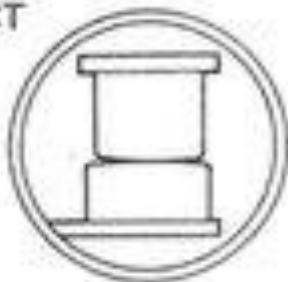


# Worn Cap



# Points and Condenser

**CORRECT**



**PITTED**



**REPAIR OR REPLACE**

**ONE SIDE CONTACT**



**BURNED**



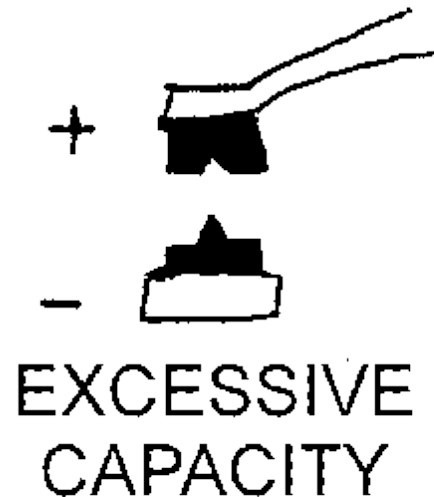
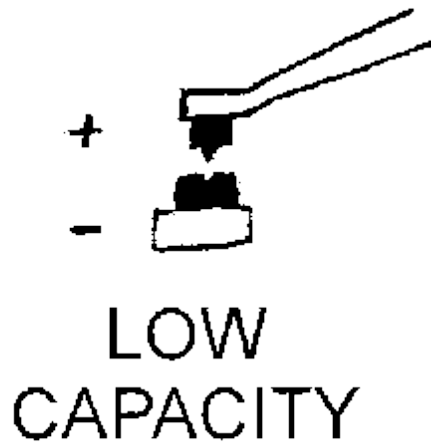
**BADLY WORN**



**REPLACE**

# Influence of Condenser

## CONDENSER CAPACITY



# NAPA Replacements

- ▶ Condenser - 37-41 FA49
- ▶                   42-48 FA54
- ▶ General condenser IH200
  
- ▶ Ignition Resistor ICR40



# Coil

- ▶ Stock?
- ▶ Stock reconditioned?
- ▶ Modern Tube type?

# Stock or Modern?



# Timing by KR Wilson



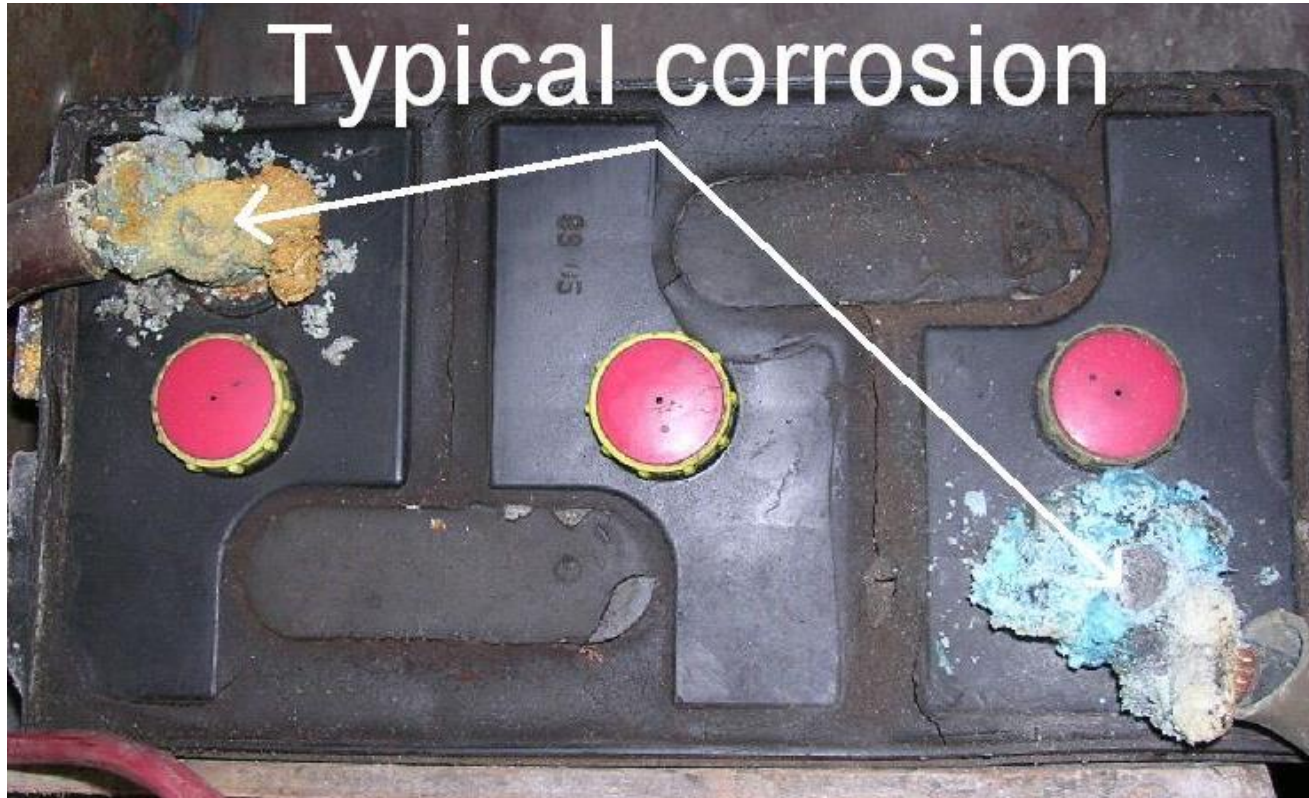
# Electrical

- ▶ Battery condition and state of charge?
- ▶ Generator/regulator output?
- ▶ Wire Harness
- ▶ Lights

# Battery

- ▶ At a full 6V?
- ▶ Water level?
- ▶ Signs of corrosion on battery post?
- ▶ Cable condition?

# Corrosion = Bad





# Good Grounding Needed



# Generator / Regulator





# Wire Harness and Lights

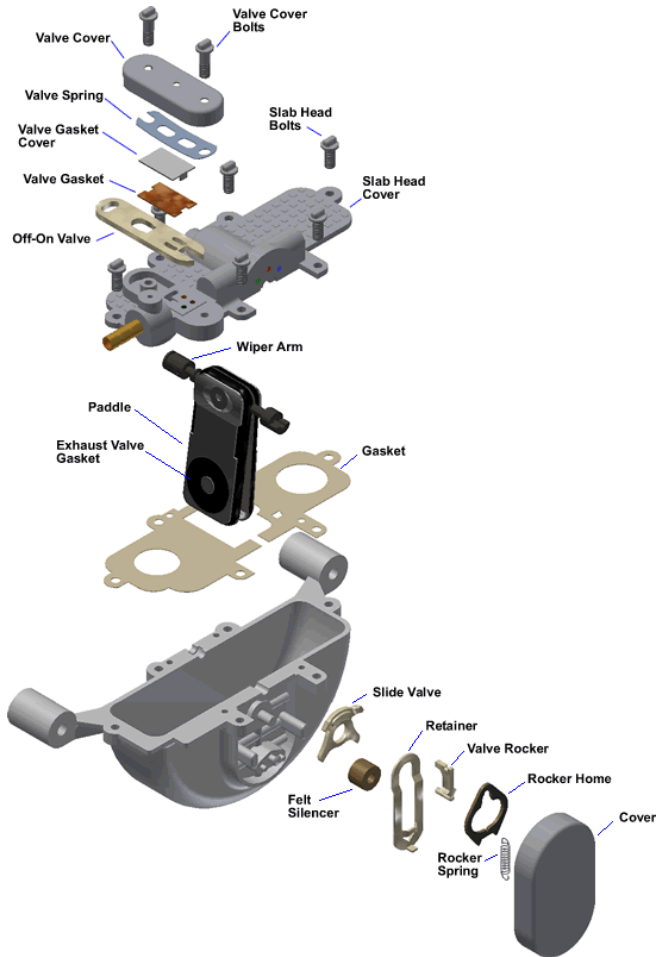
- ▶ Harness condition? Cracked?  
Frayed/Exposed wires? Corrosion?
- ▶ Lights
- ▶ Brake lights!!!!
- ▶ LED plug in bulbs?
- ▶ Halogen Headlight conversion?

# Taillights



Housing painted white to better reflect light

# Wipers



# RAINX!



Gas, Oil, + Grease

# Gasoline

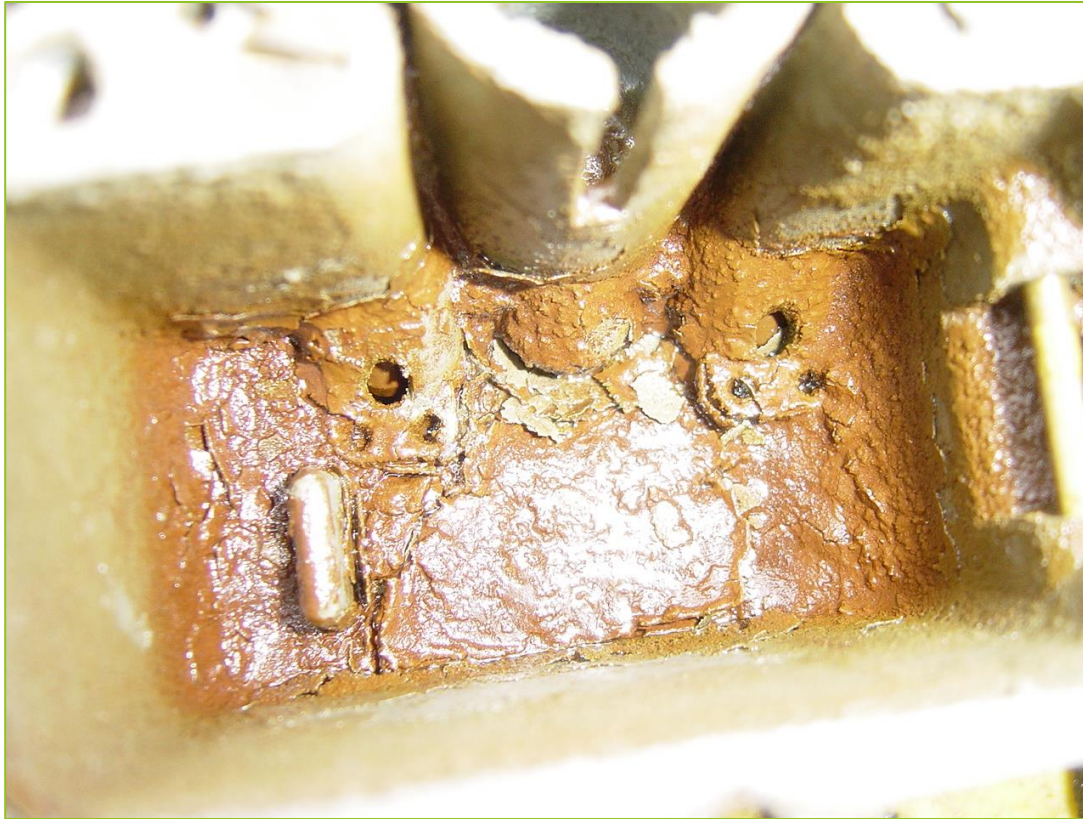
- ▶ How Old is it?
- ▶ Any Stabilizer used?
- ▶ Time to change your Fuel Filter
- ▶ Inspect Fuel Lines, leaks, heavy rust(behind brackets), Rubber Line must be inspected.
- ▶ Clean sediment bowl. Check Pump operation.
- ▶ Is you tank clean?



# Yikes!



# How did it run?





# Oil

- ▶ Which oil to use?
- ▶ Detergent?
- ▶ Non-Detergent?
- ▶ Synthetic?
- ▶ What Weight?
- ▶ Which ever you choose, change it now.

# Trans/Rear End

- ▶ Use GL4 rated gear oil.
- ▶ GL5 will “eat” yellow metals such as Brass
- ▶ Check fluid level and change if dirty or you can't remember changing it...ever.

# Available through NAPA



# Steering Box



- ▶ Check fluid level and top off

# Cooling System

- ▶ Hose condition?
- ▶ Radiator clean and free flowing?
- ▶ Coolant condition and level?
- ▶ Fan belt(s) condition, proper tension?
- ▶ Water Pumps, spin freely, leakage?
- ▶ What type of coolant?
- ▶ 50/50 mix or distilled water with additives.

# Radiator



No bugs on the front and bent fins on the back!

# Brakes

- ▶ Check your shoes if it's been a while since you've seen them.
- ▶ Adjust them up for a good firm pedal.
- ▶ Inspect all linkage, cables, Hydraulic lines for any signs of abnormal wear.
- ▶ Check wheel bearings for “play” and adjust as needed.

# Suspension + Steering

- ▶ Visual inspection for leaking shock absorbers
- ▶ Inspect for loose linkage and adjust as needed
- ▶ Tie rod ends, spring shackles, bushings, links etc.



# Tires

- ▶ Check for abnormal wear patterns
- ▶ Inflate to proper pressure
- ▶ Don't forget the spare!



# Two most important tools for Touring

